

A M S T O R I A



ACTUAL SITE IMAGE



GREEN



INTELLIGENT



SECURE



THE TOWNSHIP DERIVES ITS NAME FROM THE EVERGREEN TREE CALLED ALSTONIA

# AMSTORIA

This 126 Acre township is situated on Dwarka Expressway offering exquisite lifestyle amidst an extensively detailed landscape. Nearly 24 acres of soft/hard landscaping has earned Amstoria its name. A total of 4,000 trees are to be planted out of which about 2,500 have already been planted under the green living initiative aimed at enhancing the quality of life of the residents. The ratio of the residences to open spaces allows each household to enjoy a fair share of the greens, early morning sun and cool breeze.



ACTUAL SITE IMAGE

AMSTORIA PLOTS & ROADS



ACTUAL SITE IMAGE

## PLOT SIGNAGES



ACTUAL SITE IMAGE

## AMSTORIA PLOTS



GREEN



INTELLIGENT



SECURE

# LUTYENS PARK

The Lutyen plot cluster and majority of the country floors have been conceived on courtyard concept. A central green space for each group of 35 Plots and 60 floors has been curated so that each cluster gets a green space and an interactive space to encourage community living. Parks have been designed either as theme parks or as a park catering to a specific sports activity providing a unique experience to each cluster. Total of eight such clusters or interactive housings groups have been created in the Lutyen part of the township. In addition to the theme based parks there are other large linear parks for residents.



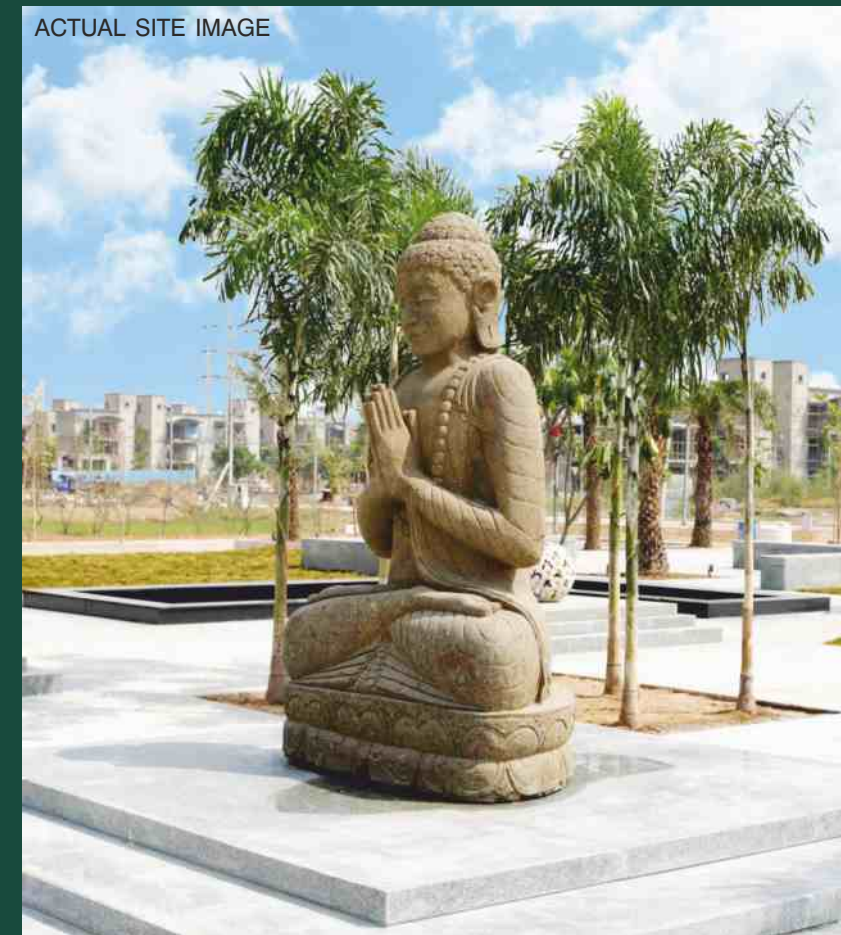
ACTUAL SITE IMAGE

PARK VIEW



AERIAL VIEW OF PARK

ACTUAL SITE IMAGE



ACTUAL SITE IMAGE

# FRONT VIEW OF PARK



ACTUAL SITE IMAGE



ACTUAL SITE IMAGE

LANDSCAPE FEATURE

## LUTYENS PARK

SPORTS FACILITIES PROVIDED IN PARKS



BADMINTON COURT



BASKET BALL COURT



TENNIS COURT



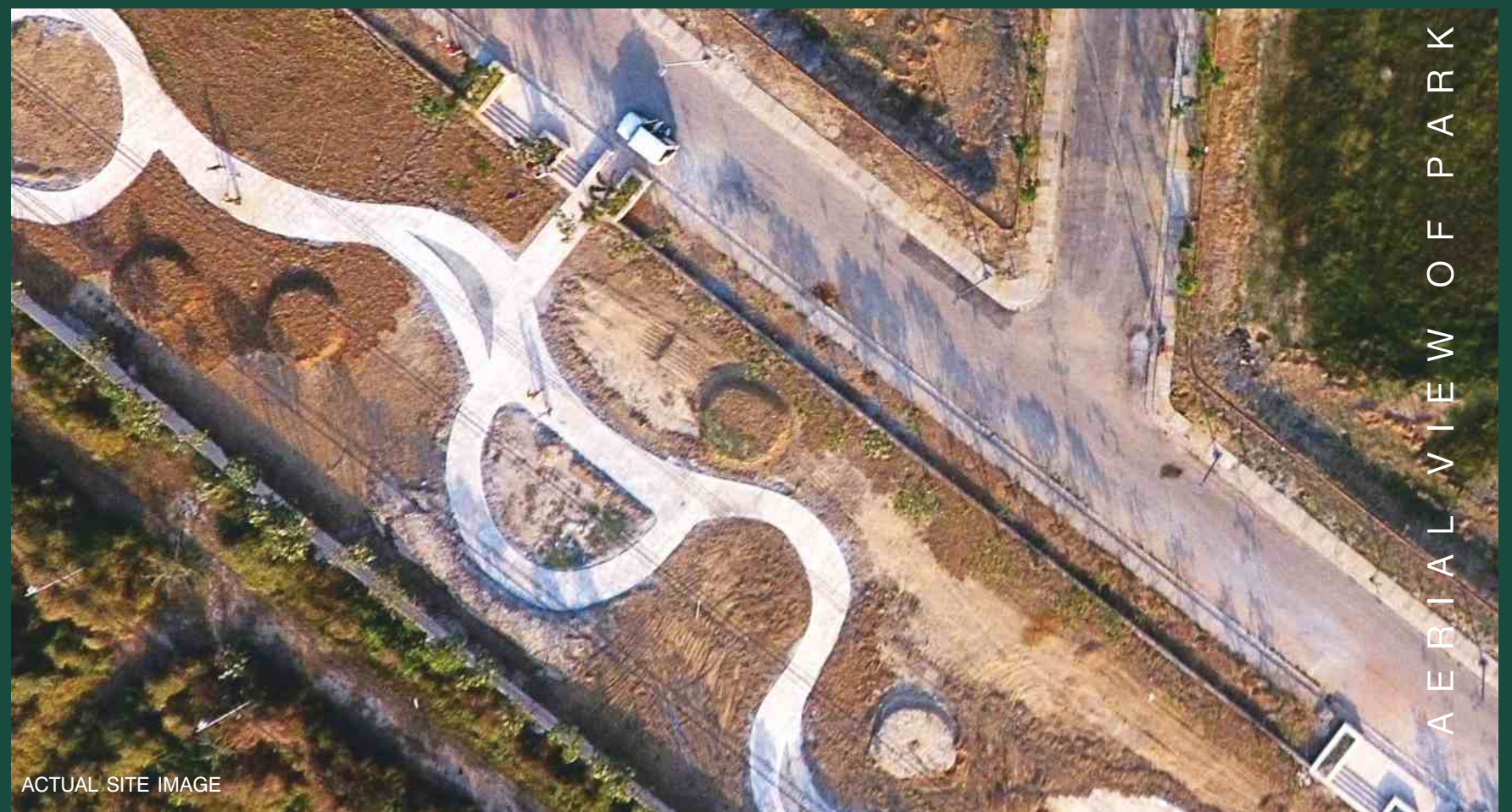
MULTIPURPOSE COURT



MINI SKATING RINK



KIDS PLAY AREA



ACTUAL SITE IMAGE

AERIAL VIEW OF PARK

# COMMITMENTS & BEYOND

Our aim is to deliver more than just your home. Some of our initiatives go beyond our commitments.

## ENHANCED SECURITY:



**GATED TOWNSHIP** - The township provides a gated living manned by security company of repute, 24x7 security with multiple tiers of security and more.



**A NETWORK OF CCTV CAMERAS HAVE BEEN SET UP ACROSS THE TOWNSHIP** (about 120 IP Cameras with 80 meter night vision) the feed from each of these cameras shall be stored and will be available for 30 days at the central security center.



**DEDICATED PATROL VEHICLE** has been allotted for the township to provide immediate assistance & enhanced security.



**SHUTTLE SERVICES** - A dedicated scheduled shuttle service to provide easy connectivity from Amstoria to Basai Chowk.



**ELECTRONICALLY OPERATED MAIN GATES** - MS Gates will be operated through an imported electric motor system.



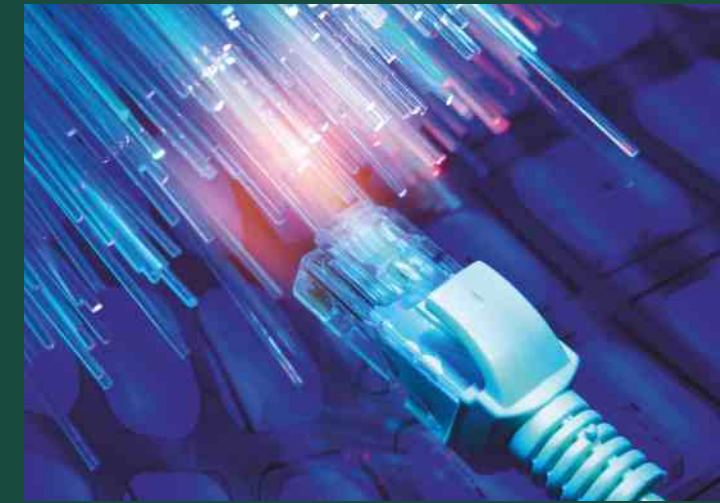
On demand **SECURITY ESCORT SERVICES** on motor bikes for residents moving out of the township from 9pm till 5am till Basai Chowk.



**FACILITY MANAGEMENT HELPDESK** will be created in Central security block.

## DIGITALLY YOURS:

- **MULTIPLE WI-FI ENABLED ZONES** will be created across the township at various locations.
- **FIBER OPTIC CABLE, BY SOUL MICRON TECHSERVE LLP,** network is in the works throughout the township to support plug and play for various facilities:
  - Intercom - IP based intercom facility will be provided throughout the township.
  - Telephone Services will be provided - Reliance/Tata/Bharti/BSNL/Vodafone (any one service provider)
  - Cable TV will be provided - Den/Hathway/Citi Cable (any one service provider)
  - Internet will be provided - Reliance/Tata/Bharti (any one service provider)



## RESPONSIBILITIES TOWARDS ENVIRONMENT:

- **DRIP IRRIGATION OR MICRO-IRRIGATION** has been done to save water. In this process water drips slowly to the roots of plants, either from above the soil surface or below the surface. In this system we distribute water through a network of valves, pipes, tubing, and emitters.
- Sprinklers have been used to irrigate landscapes areas so as to maximize water savings. **THIS SYSTEM ALSO CONTROLS DUST.**

*All services mentioned in this communication shall be chargeable and are provided by third party vendors as the case maybe. The said services will be provided post payment of all applicable charges.*



## EFFICIENT DISPOSAL:

- DOOR TO DOOR GARBAGE COLLECTION FACILITY - Door to door garbage collection service would be provided and the collected trash/garbage would be disposed off at suitable places designated by municipal authority.
- GARBAGE SEGREGATION AT SOURCE WOULD BE IMPLEMENTED - Residents would be educated and encouraged to separate dry and wet garbage for better disposal.
- A SEPARATE HOUSEKEEPING AGENCY has been hired for cleaning common areas in township on regular basis.
- SEPARATE PET AREA has been created in township for pet lovers.



ACTUAL SITE IMAGE

## ROADS & COMMON AREAS:

- In the township combination of blacktop and pavers have been used.
- Paver patterns have been intelligently created to break the monotony of the conventional black top roads.
- An aesthetic mix of blacktop roads integrated with concrete paver in earthen tones like beige & red.
- Zebra/pedestrian crossings, plot entries & road junctions have been highlighted in interesting patterns and form part of the roads themselves.
- Paved pathways provided for pedestrian walking are extensively shaded.
- Layered greens have been provided along roads.
- Special care has been taken to ensure ample lighting in common areas.
- Street lighting has been designed to have maximum coverage to enhance the security and the aesthetic appeal of the township.



ACTUAL SITE IMAGE



ACTUAL SITE IMAGE



ACTUAL SITE IMAGE

The entire township has been equipped with aesthetically designed directional signage's, in keeping with the theme of the township, outfitted with LED lighting.



ACTUAL SITE IMAGE



ACTUAL SITE IMAGE

amstoria  
*by*  
**btp**

---

Regd Office: M-11, Middle Circle, Connaught Circus, New Delhi - 110001  
Tel.: +91-124-385-2787, Fax: +91-124-385-2999,  
Email: [customercare@btp.com](mailto:customercare@btp.com), Website: [www.btp.com](http://www.btp.com), CIN - U45201DL2003PLC121733

---