



# THE HERMITAGE

Sector-103, Gurugram



THE AFFLUENT  
LIFESTYLE

POSSESSION BEGINS\*\*

2,3,4 BHK APARTMENTS, PENTHOUSES & VILLAS



Actual Image of the hermitage complex

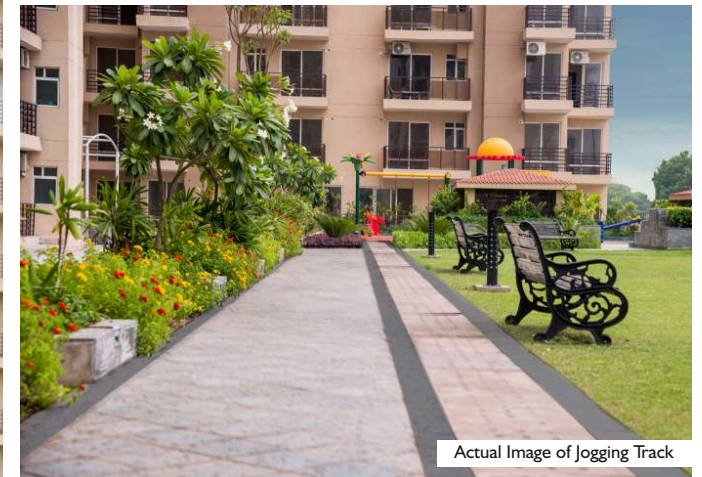
Actual Image



Actual Image of The Hermitage Complex



Actual Image of Landscaped Green



Actual Image of Jogging Track



Actual Image of Kids Play Area



Actual Image of The Hermitage Complex



Actual Image of Lawn Tennis Court



Actual Image of Badminton Court



Actual Image of Half Basketball Court

# THE COMPLEX

PLANNED TO PERFECTION.

**THE  
HERMITAGE**  
Sector-103, Gurugram

**Satya**  
Group

## THE COMMUNITY

Spread Across 10.2 Acres

Choice of Apartments,  
Penthouses & Villas

Ample Green Spaces  
Throughout the Development

Ample Parking Space for  
Residents as well as Visitors

## THE RESIDENCES

Choice of 2,3 and 4 BHK

Residences Inspired by New  
Age Straight Line Modern  
Architecture

Spacious & Naturally Lit  
Homes

Private Terrace & Splash Pools  
in each Penthouse

Energy Efficient Homes

## THE INFRASTRUCTURE

Optical Fibre at Your Doorstep  
for Multiple Services on Demand

Power Back-up

**LOADED WITH  
FACILITIES.**

**THE  
HERMITAGE**  
Sector-103, Gurugram

**Satya**  
Group

### **LOW DENSITY**

51\* Units per Acre

### **SECURITY**

Gated Community

Access Control  
In Towers

CCTV

### **CLUB HOUSE**

Swimming Pool

Multipurpose Hall

Party Lawn

Billiards Room

Card Room

BBQ Spots

### **KIDS ZONE**

Open Kids Play Area

Arts & Craft

Books Reading Area

Board Games

Carom Area

### **HEALTH & SPORTS**

Fully Equipped Gym

Yoga & Meditation

Sports Coaching

Half Basketball Court

Badminton Court

Tennis Court

Cross Training Area

First Aid Care

Jogging Track

### **ENVIRONMENT**

Central Green Zone

Amphitheatre

Open Sitting

Rain Water Harvesting

100% LED Lights

Water Bodies

STP

Solar Panels

# BIRD'S EYE VIEW OF THE HERMITAGE



## THE HERMITAGE

Sector-103, Gurugram



Artistic Impression

### LEGENDS

- A MAIN ENTRY
- B RECREATIONAL CLUB
- C SWIMMING POOL
- D KIDS POOL
- E POOL DECK
- F PARTY LAWN
- G CENTRAL LAWN
- H JOGGING TRACK
- J AMPHITHEATRE
- K SKATING RINK
- L KIDS PLAY AREA
- M SWINGS AND SLIDE ZONE
- N BADMINTON COURT
- P HALF BASKETBALL COURT
- Q YOUTH CORNER
- R YOGA / MEDITATION CENTRE
- S WATER FOUNTAIN
- T RAMPS
- U DROP OFF POINT
- V TENNIS COURT

# SITE MAP



4 BHK+SERVANT

3 BHK+SERVANT (TYPE-A)

3 BHK+SERVANT (TYPE-B)

3 BHK+SERVANT (TYPE-C)

2 BHK+SERVANT



2BHK, 2 TOILETS  
& SERVANT ROOM

AREA 1450 SQ.FT.  
(134.708 SQ.M.)



# THE HERMITAGE

Sector-103, Gurugram



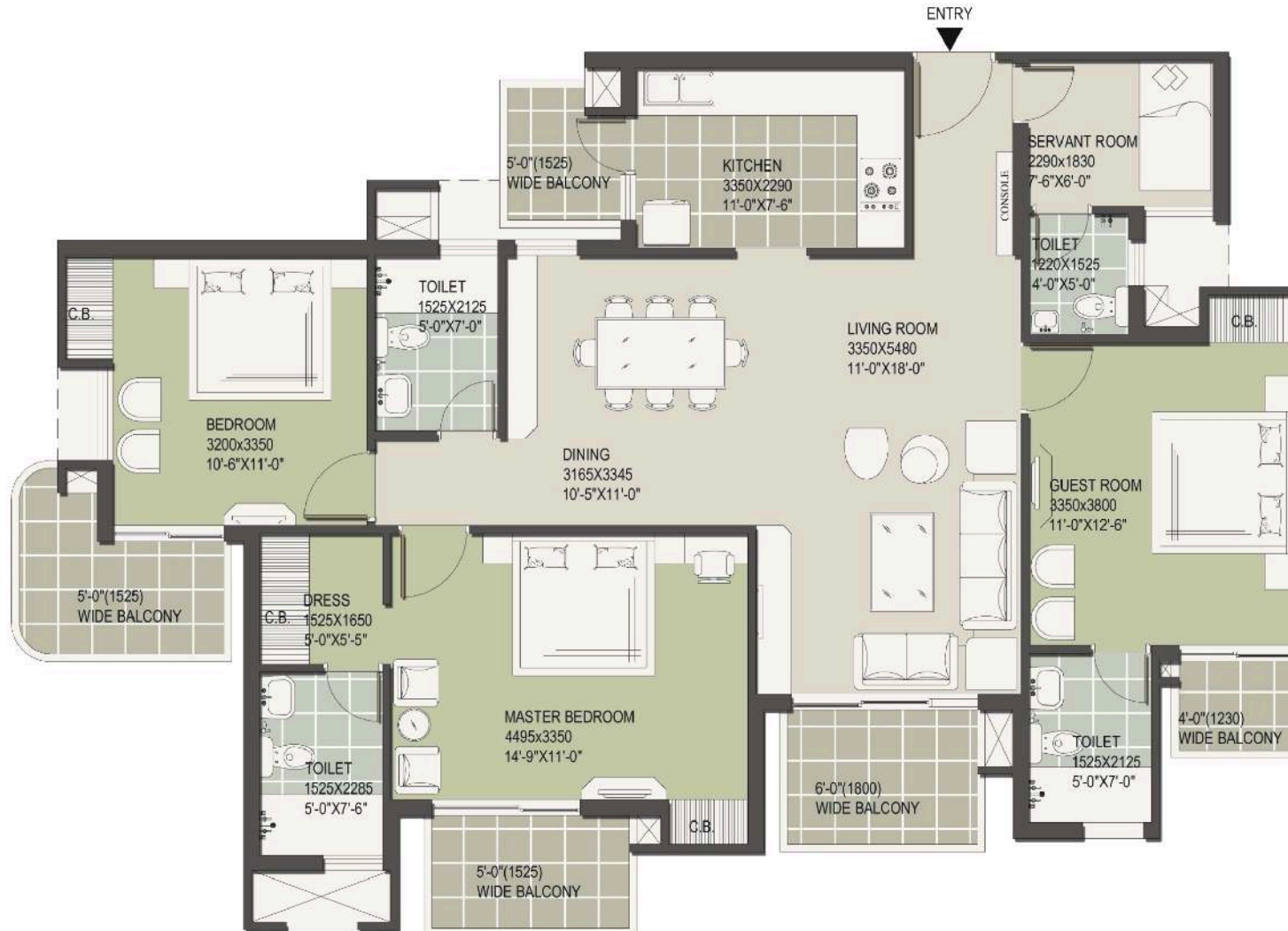
3BHK, 3 TOILETS  
& SERVANT ROOM

AREA 1991 SQ.FT.  
(184.97 SQ.M.)



# THE HERMITAGE

Sector-103, Gurugram



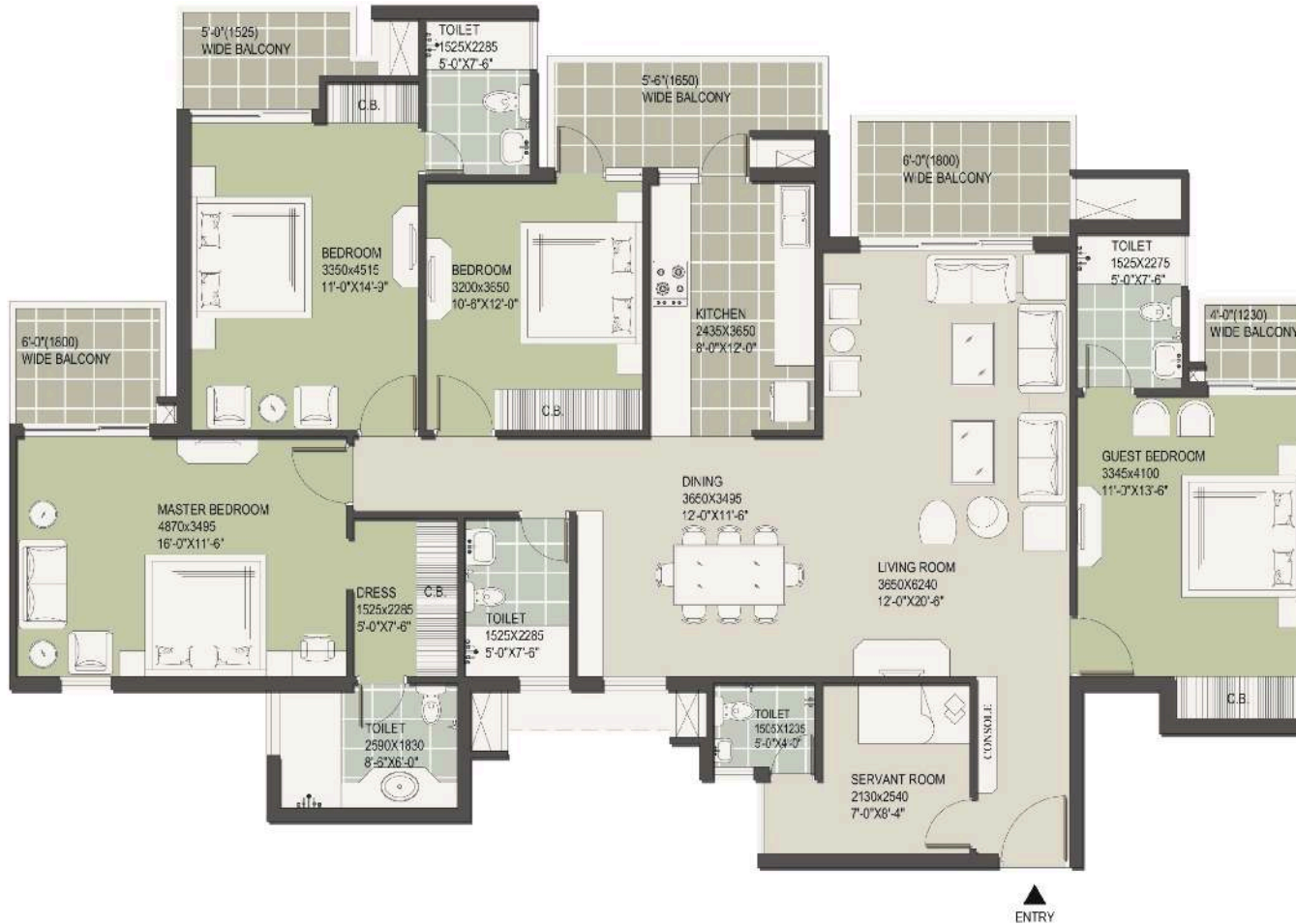
4BHK, 4 TOILETS  
& SERVANT ROOM

AREA 2639 SQ.FT.  
(245.169 SQ.M.)



# THE HERMITAGE

Sector-103, Gurugram



4BHK, STUDY, SERVANT ROOM,  
SPLASH POOL & TERRACES (PENTHOUSE)

AREA 4711 SQ.FT  
(437.666 SQ.M.)



# THE HERMITAGE

Sector-103, Gurugram



# SPECIFICATIONS

## STRUCTURE

RCC Framed Earthquake Resistant Structure

## LIVING/DINING/PASSAGE & LOBBY WITHIN APARTMENT

|        |                           |
|--------|---------------------------|
| Floors | Vitrified Tiles           |
| Walls  | Oil Bound Distemper (OBD) |

## BEDROOMS

|         |   |
|---------|---|
| Floors  | Laminated Wooden Flooring in Master Bedroom<br>Vitrified Tiles in other Rooms |
| Walls   | Oil Bound Distemper (OBD)   |
| Ceiling | Oil Bound Distemper (OBD)   |

## KITCHEN

|                     |   |
|---------------------|---|
| Floors              | Anti-skid Ceramic Tiles   |
| Walls               | Tiles up to 2'-0" above counter and Tiles upto<br>5'-0" on rest of exposed walls and Oil Bound<br>Distemper in the balance area |
| Ceiling             | Oil Bound Distemper   |
| Counter             | Granite   |
| Fittings / Fixtures | CP Fittings, Single Bowl SS Sink Modular Kitchen  |

## UTILITY / SERVANT ROOM

|                 |  |
|-----------------|--|
| Floor           | Ceramic Tiles  |
| Walls & Ceiling | Oil Bound Distemper (OBD)  |
| Toilets         | Anti-skid Tiles Flooring and Ceramic Tiles on<br>Dado up to 7'-0", Conventional CP Fittings<br>and Sanitary Ware |

## TOILETS

|               |   |
|---------------|---|
| Floors        | Anti-skid Ceramic Tiles                   |
| Ceiling       | Oil Bound Distemper                       |
| Counters      | Marble / Granite                          |
| Sanitary Ware | Single Lever CP Fittings, White Chinaware |
| Wall          | Combination of Ceramic Tiles & Oil Bound  |

## BALCONY

|         |                         |
|---------|-------------------------|
| Floor   | Anti-skid Ceramic Tiles |
| Railing | MS Painted Railing      |

## DOORS

|   |   |
|---|---|
| Door Frames                               | Hard Wood Frame                                     |
| Internal & Entrance Doors                 | Skin moulded panel doors/flush<br>shutters          |
| External Doors /<br>Windows / Ventilators | Anodised Aluminium/UPVC glazed<br>Doors and Windows |

## ELECTRICALS

Modular Switches, Copper Wiring in concealed conduit with

## ENTRANCE & LIFT LOBBY

|       |   |
|-------|---|
| Floor | Combination of one or more of<br>Anti-skid Tiles / Marble / Granite |
| Walls | Granite and Textured Paint  |

## STAIRCASE

|       |  |
|-------|--|
| Floor | Combination of One or More Indian<br>Marbles / Granite / Vitrified Tiles |
| Lobby | Combination of One or More Indian<br>Marble / Granite / Vitrified Tiles  |

## POWER BACK-UP

|                |               |
|----------------|---------------|
| Apartment Type | Power Back-up |
| 2BHK Unit      | 3 KVA         |
| 3BHK Unit      | 4 KVA         |
| 4BHK Unit      | 5 KVA         |
| Penthouse      | 7.5 KVA       |

## SECURITY SYSTEM

Intercom, CCTV in Entrance Lobby at Ground Floor

# LOCATION MAP

## THE HERMITAGE

Sector 103, Gurgaon



- PROJECTS BY PROMOTERS
- ⊘ PROPOSED METRO ROUTE
- ⊘ EXISTING METRO ROUTE
- RAILWAY LINE
- DELHI - JAIPUR HIGHWAY (NH-8)
- DWARKA - GURGAON EXPRESSWAY

- INDUSTRIAL
- RESIDENTIAL
- COMMERCIAL
- AGRICULTURAL

Map not to scale

# SATYA DEVELOPERS: DELIVERING THE BEST



## COMPLETED PROJECTS#



THE GALAXY, GURUGRAM  
5-star Hotel, Shopping & Spa



ELEMENT ONE, GURUGRAM  
High Street Retail and Fully  
Furnished Serviced Apartments

## ONGOING PROJECTS



PLATINA, GURUGRAM  
Luxury Group Housing Project



NORA, GURUGRAM  
One Room Apartments at The Hermitage



THE LEGEND, GURUGRAM  
Premium Residential Group Housing



CENTRUM PLAZA, GURUGRAM  
Premium Office Complex



THE HIVE, GURUGRAM  
Integrated Commercial Complex



MALWA COUNTY PHASE II  
INDORE  
110 Acre Integrated Township



MALWA COUNTY, INDORE  
110 Acre Integrated Township



CITY CENTRE, BATHINDA  
Shopping cum Entertainment Centre



SECTOR-99A, GURUGRAM  
(3/4 BHK Luxury Residences)



SATYA DEVELOPERS PVT. LTD.

Regd. Office: 34, Babar Lane, Bengali Market, New Delhi 110 001

Corporate Office: Plot No. 8, Sector-44, Gurgaon, Haryana - 122002 T: +91 124 4989300 Toll free: 1800 3000 4441 F: +91 124 4989366

sales@satyadevelopers.com SMS 'SATYA' to 53030 www.satyagroups.in

The Project is financed by 'Yes Bank Ltd.' with security Trustee being IDBI Trusteeship Services Limited. Yes Bank Limited shall issue NOC for sale of each of the Unit in the Project. The Developer shall facilitate the same.

License No. 28 of 2011 dated 28-03-2011 and Order No. LC-2415-JE(VA)/2011/14076-86 dated 21/9/11, Group Housing Colony measuring 10.20 Acres, M/s SatyaDevelopers Pvt. Ltd. ,Building plans approval No. ZP-697/JD(BS)/2011/14900 dated 05-10-2011 with Dwelling Units-468, Studio Apartment-44 & EWS-93. Provision for Community Centre/Club, Shopping Area and Nursery school, Original Approvals available at Corporate Office. \*T&C apply. \*\*OC received for Tower T3, T4, T5, T6, T7, T8.

Follow us on



Member of  
**CREDAI**  
CREDAI - NCR